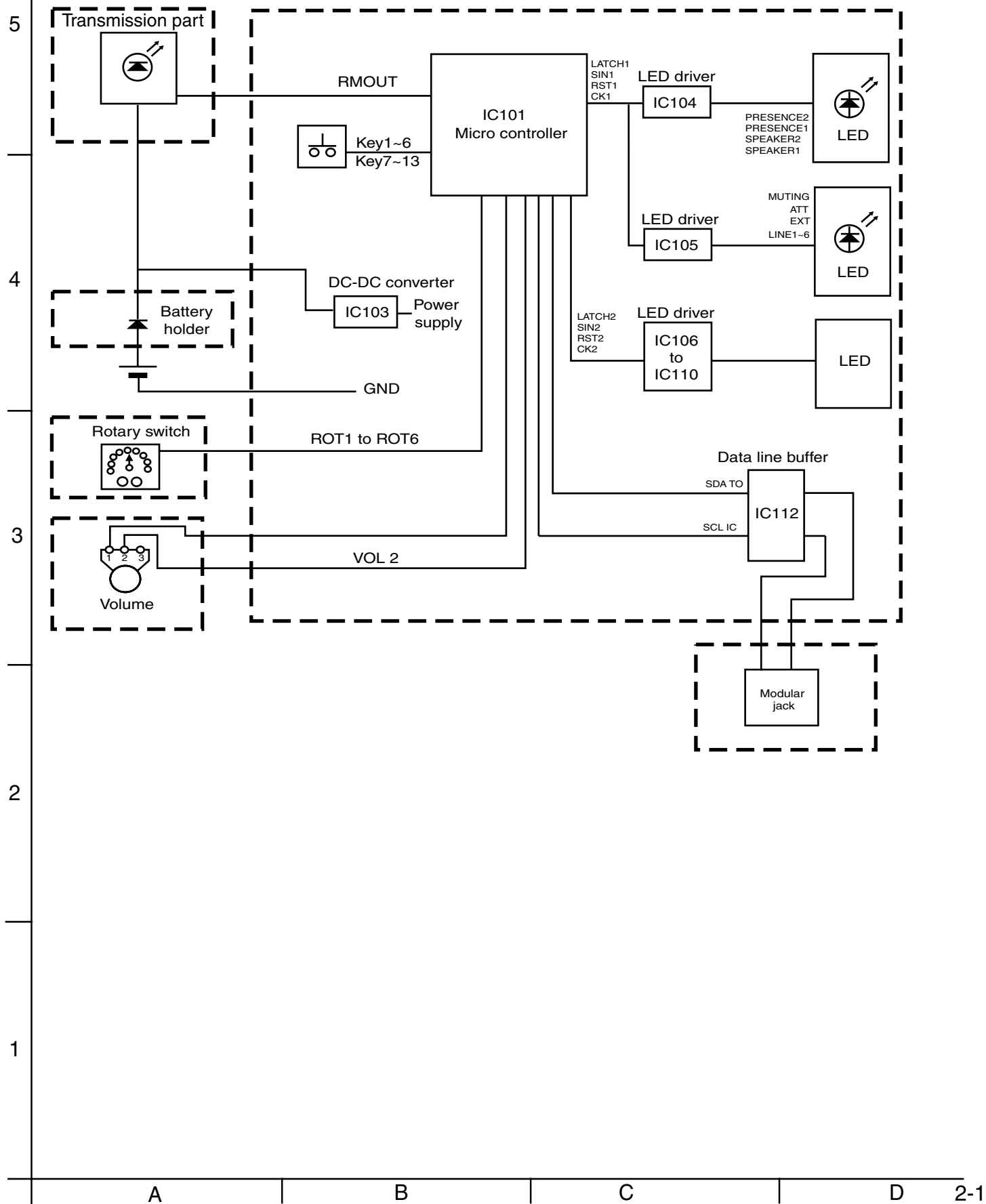
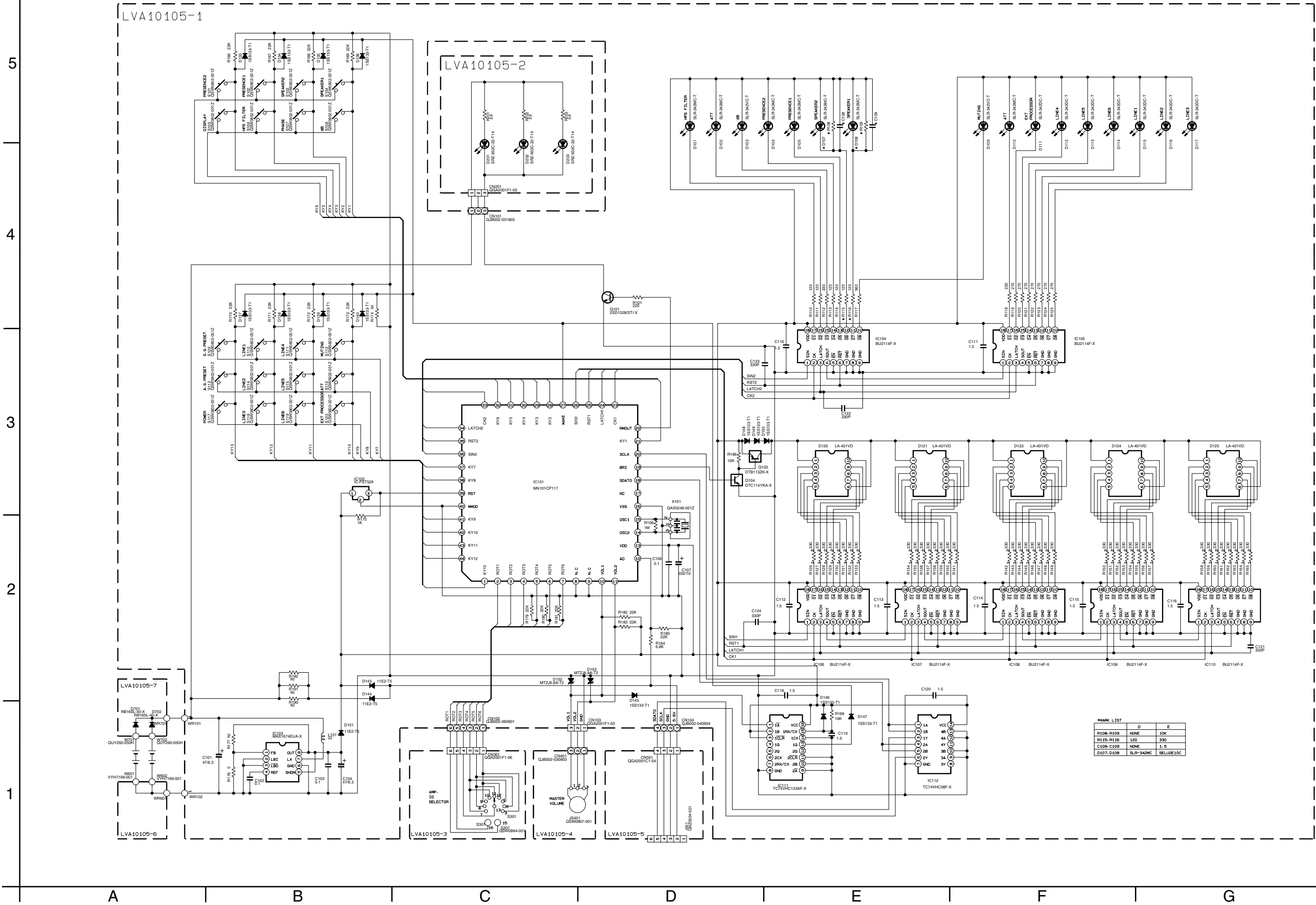


# Block diagram



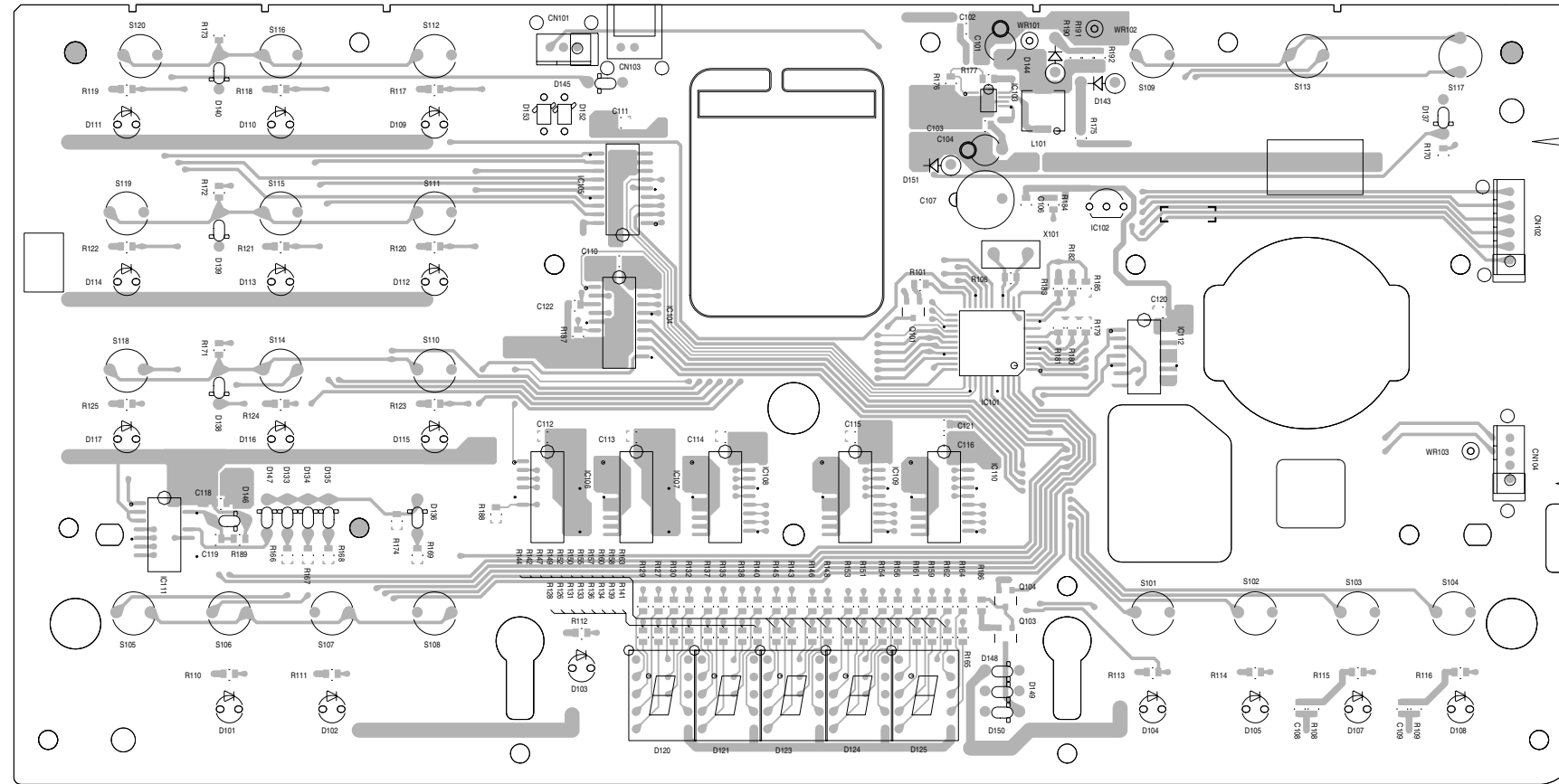
< M E M O >

# Standard schematic diagram

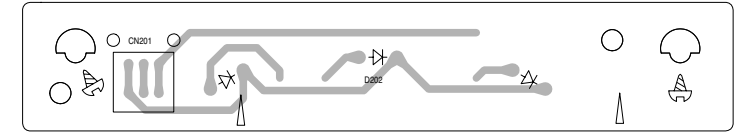


# Printed circuit boards

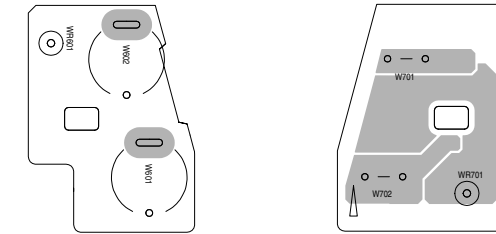
## ■ Main board (Front side)



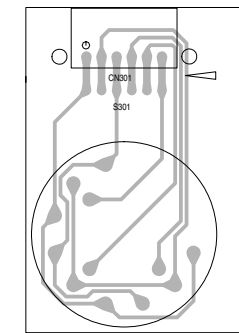
## ■ Remote controller transmission board



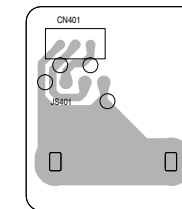
## ■ Battery holder board



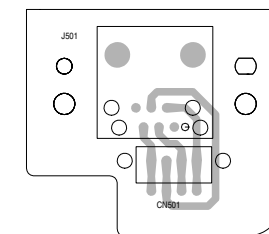
## ■ Rotary switch board



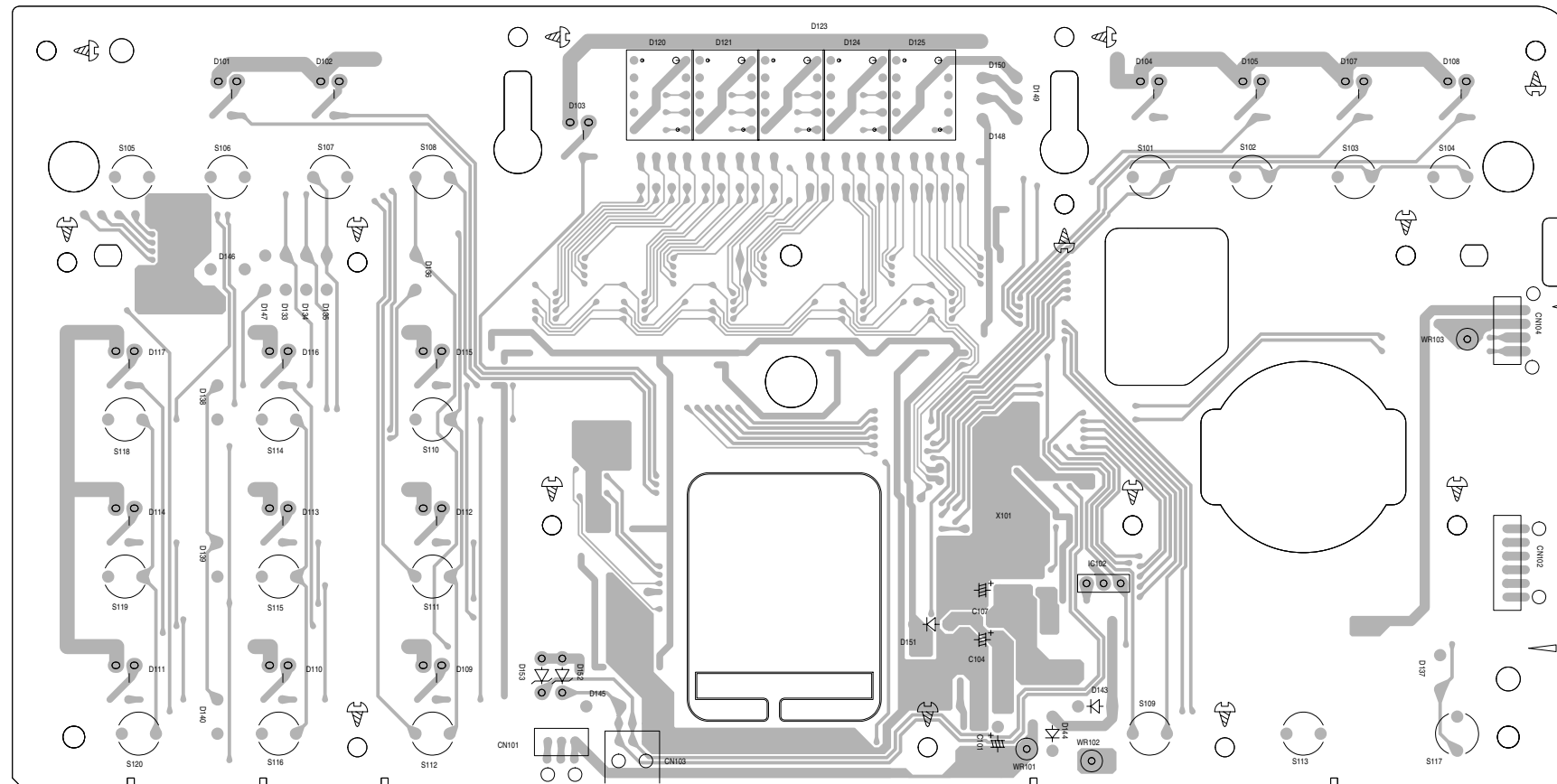
## ■ Volume board



## ■ Modular jack board



## ■ Main board (Reverse side)



5

4

3

2

1

A

B

C

2-4

D

E

F

G

H